

Mowery Subcontractor Orientation

Part 1: Jobsite Safety Policies

Part 2: COVID19 Safety Policies





Part 1

Jobsite Safety

Disclaimer

Safety Leadership

Project-Specific Guidelines

General Worksite Safety

Occupational Health & Wellness

Personal Protective Equipment

Fall Protection

Fire Safety

Tools & Equipment

Electrical Safety

Motor Vehicles & Traffic

Trenching & Excavation

Confined Spaces

Concrete & Masonry

Steel Erection

Disclaimer

This orientation is not intended to represent or replace the safety training responsibilities of employers of employees working on a Mowery project. It is the responsibility of each subcontractor, lower-tier subcontractor, and vendor to ensure its employees have been properly trained in accordance with applicable laws, statutes, ordinances, rules and regulations, and lawful orders of public authorities, for the safety of persons and property.



Safety Leadership

In this section:

- Safety is not optional
- Uncompromising safety leaders

If you **see something** that
doesn't look right, **say something**
to your supervisor

Safety is not optional

- We are Safe Always, no matter what.
- We put Safety First to protect our Team Members, Subcontractors, Clients and Community.
- Our goal is to make sure that everyone involved in our projects goes home to their families and loved ones in a healthy and safe condition.



Uncompromising safety leaders

- Believe that all incidents are preventable
- Believe their commitment to safety is non-negotiable
- Believe everyone is empowered to be a safety leader
- Create the conditions for everyone to safely return home each night



Uncompromising safety leaders

- Are familiar with and follow regulatory and site safety rules
- Practice situational awareness
 - If they see something at-risk, they address and/or report it immediately
- Contribute and participate in safety meetings, hazard identification / correction, and other safety activities





Project-Specific Guidelines

In this section:

- Daily huddles
- Disciplinary action
- Substance abuse policy
- Incident reporting

Daily huddle

- Conducted by the Mowery Superintendent with Subcontractor Foremen, the Daily Huddle is a discussion of specific activities for the work day, the potential hazards associated with the activities and the methods necessary to mitigate those hazards.

Attendance by Subcontractor Foremen is **mandatory**.



Disciplinary Action

Grounds for Suspension or Removal from a Mowery Project include, but are not limited to:

- Failure to follow policies and procedures
- Failure to wear PPE
- Fighting
- Alcohol or Drug Use or Possession
- Weapons Possession
- Serious or intentional unsafe acts



Substance abuse policy

- We are committed to maintaining a safe and drug-free workplace
- No personnel shall report to work under the influence of alcohol beverage or illegal drugs
- No drinking of alcoholic beverages at any time on the job sites, parking lots or property of the owner
- More info can be found at <http://www.drugfreeconstruction.org/>



Incident reporting

Incident defined:

An incident is an unplanned, undesired event that results in injury, property damage, or otherwise adversely affects the project.



Incident reporting

- Report all work related incidents to your supervisor **immediately**
- The subcontractor supervisor must then immediately report the incident to the Mowery Superintendent
- A written report must be submitted to the Mowery Superintendent **within 48 hours** of occurrence





General Worksite Safety

In this section:

- Worksite hazards
- Stop work authority
- Pre-job planning
- Globally harmonized system
- Safety data sheets
- Housekeeping

Worksite hazards

OSHA's Fatal Four:

1. Falls
2. Electrocution
3. Caught in/between objects
(trench collapse, pinch points)
4. Getting struck by an object
(vehicles, falling objects)



Worksite hazards

- Do not enter restricted areas without permission
- Do not work under suspended loads
- Maintain situational awareness of equipment, vehicles and operations at all times



Stop work authority

- Stop Work Authority empowers employees and contract workers with the ability and obligation to stop work if conditions are deemed at-risk

If you **see something** that doesn't look right, **say something** to your supervisor



Pre-job planning

A step-by-step analysis of a specific activity, the potential hazards associated with the activity and the tools / methods necessary to mitigate those hazards

Consider tasks that will be performed by other trades in proximity to your work



Globally harmonized system (GHS)

- Ensures information about chemicals, including information and ingredients, can be universally communicated
- Formally known as the Hazard Communication Standard (HCS) or HazCom



Safety data sheets

- Provides all information necessary to safely handle a particular chemical
- Must be readily accessible to any employee using a hazardous chemical
- Subcontractors are responsible to submit and maintain Safety Data Sheets for all hazardous chemicals they bring on site
- Mowery Superintendents have Safety Data Sheets for hazardous chemicals used by Mowery



Safety data sheets

Most useful sections to know:

Section 1: Identification

Chemical name, emergency contact info, recommended use, etc.

Section 2: Hazard(s) Identification

All hazards regarding the chemical; required label elements

Section 4: First Aid Measures

Important symptoms/effects, acute, delayed; required treatment

Section 5: Fire-Fighting Measures

Suitable extinguishing techniques, equipment, chemical hazards from fire



Safety data sheets

Section 6: Accidental Release Measures

Emergency procedures; protective equipment; proper methods of containment and cleanup

Section 7: Handling and Storage

Precautions for safe handling and storage, including incompatibilities

Section 8: Exposure Controls/Personal Protection

OSHA's Permissible Exposure Limits (PELs), ACGIH Threshold Limit Values (TLVs), and any other exposure limit used or recommended by the chemical manufacturer along with personal protective equipment (PPE) requirements



Housekeeping

- Keep your work area clean at all times
- Place cords and hoses overhead to prevent tripping hazards
- Dispose of trash in the proper containers
- Bend or back out nails in scrap lumber

If you see something that doesn't look right, say something to your supervisor





Occupational Health & Wellness

In this section:

- Silica
- Blood borne pathogens

Silica

- Subcontractors must replace crystalline silica materials with safer substitutes whenever possible
- When feasible, Subcontractors must use engineering or administrative controls such as local exhaust ventilation to reduce exposures below the PEL



Silica

- Use protective equipment or other protective measures if engineering controls are not adequate
- Use all available work practices to control dust exposures, such as integrated water delivery systems



Blood borne pathogens

If it is reasonably anticipated Subcontractor employees will be exposed to blood or other potentially infectious materials while using first-aid supplies, Subcontractor should provide personal protective equipment (PPE) including, but not limited to:

- Gloves
- Face shields
- Masks
- Eye protection





Personal Protective Equipment

In this section:

- Head protection
- High visibility clothing
- Eye protection
- Hearing protection
- Foot protection
- Hand protection
- Respiratory protection

Head protection

- Hard hats must be worn at all times on Mowery job sites. No one is exempt from this mandatory safety requirement – including subcontractors, vendors, and visitors on the jobsite
- Damaged hard hats must be discarded and replaced immediately



High visibility clothing

- High visibility clothing (safety yellow/orange shirts and/or ANSI class II reflective safety vest) worn as an outer layer is mandatory on all Mowery projects
- Additional hi-vis PPE may be required depending on specific hazards such as roadway traffic



Eye protection

- Must be worn any time an eye hazard is present
- Prescription glasses, with side shields, must meet minimum ANSI requirements



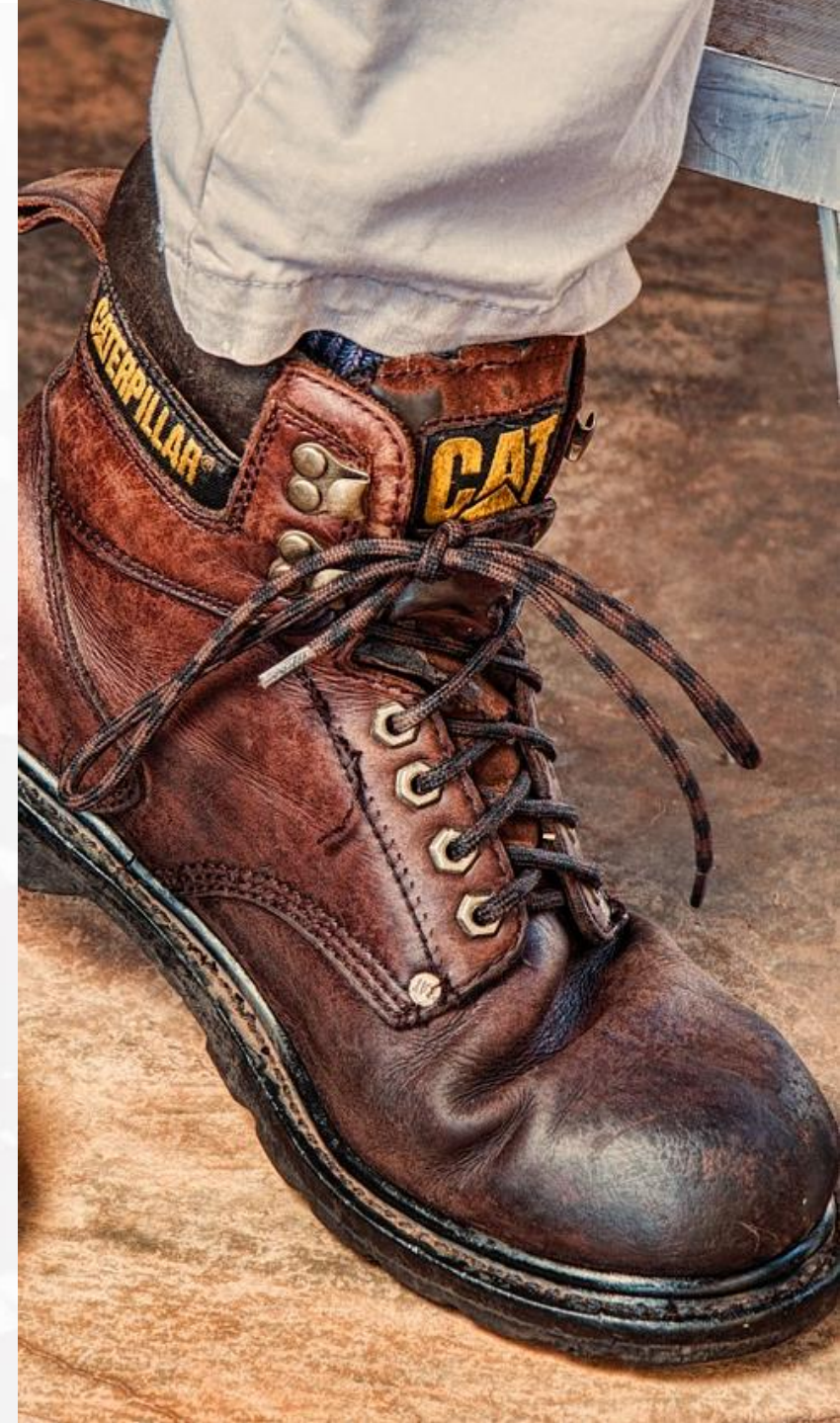
Hearing protection

- OSHA recommends that workplace noise levels be kept below 90 dBA as an 8-hour time-weighted average
- Hearing protective devices should be used any time noise levels meet or exceed 85dBA



Foot protection

- Appropriate construction footwear, typically a sturdy work boot, is required on the jobsite at all times
- Safety toe (steel or composite) footwear is highly recommended



Hand protection

- Hand protection must be used when handling jagged or sharp material, and for protection against hazardous chemicals as required



Respiratory protection

- Where workers are required to wear respiratory protection, employers must develop and implement a written respiratory protection program with required work-specific procedures
- Employees must be medically approved, fit tested and trained before they are assigned a task requiring respirator use





Fall Protection

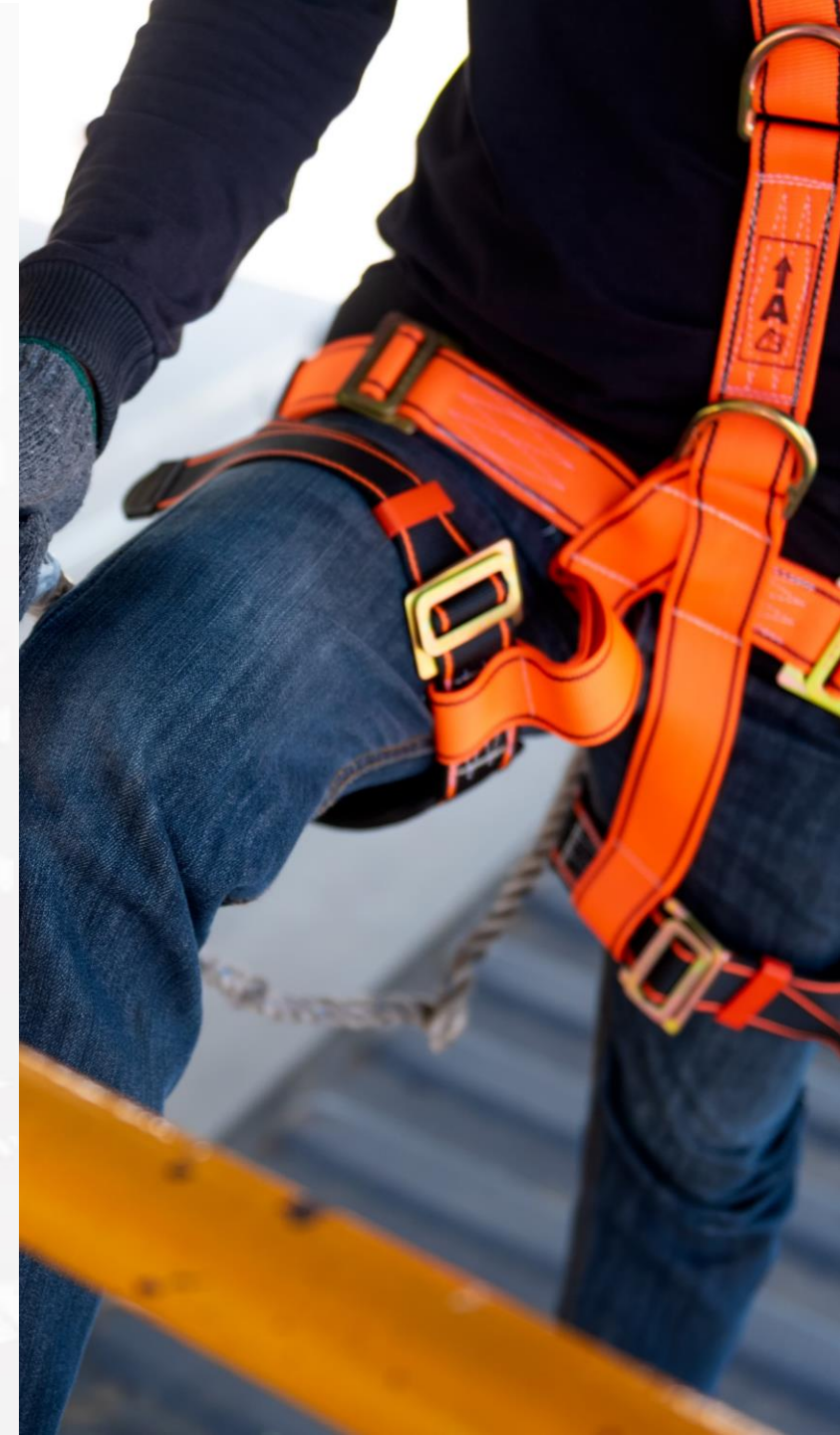
In this section:

- Fall protection
- Aerial lifts
- Guardrail systems
- Personal fall arrest systems

Fall protection

Falls are the #1 cause of injury and death on construction sites

- In order to prevent falls, for any worker potentially exposed to a fall of 6 feet or more, a fall protection system must be utilized in order to protect these individuals from falling
- Examples include but are not limited to:
 - Guardrail systems
 - Personal Fall Arrest Systems
 - Controlled Access Zone



Aerial lifts

Articulating boom lifts

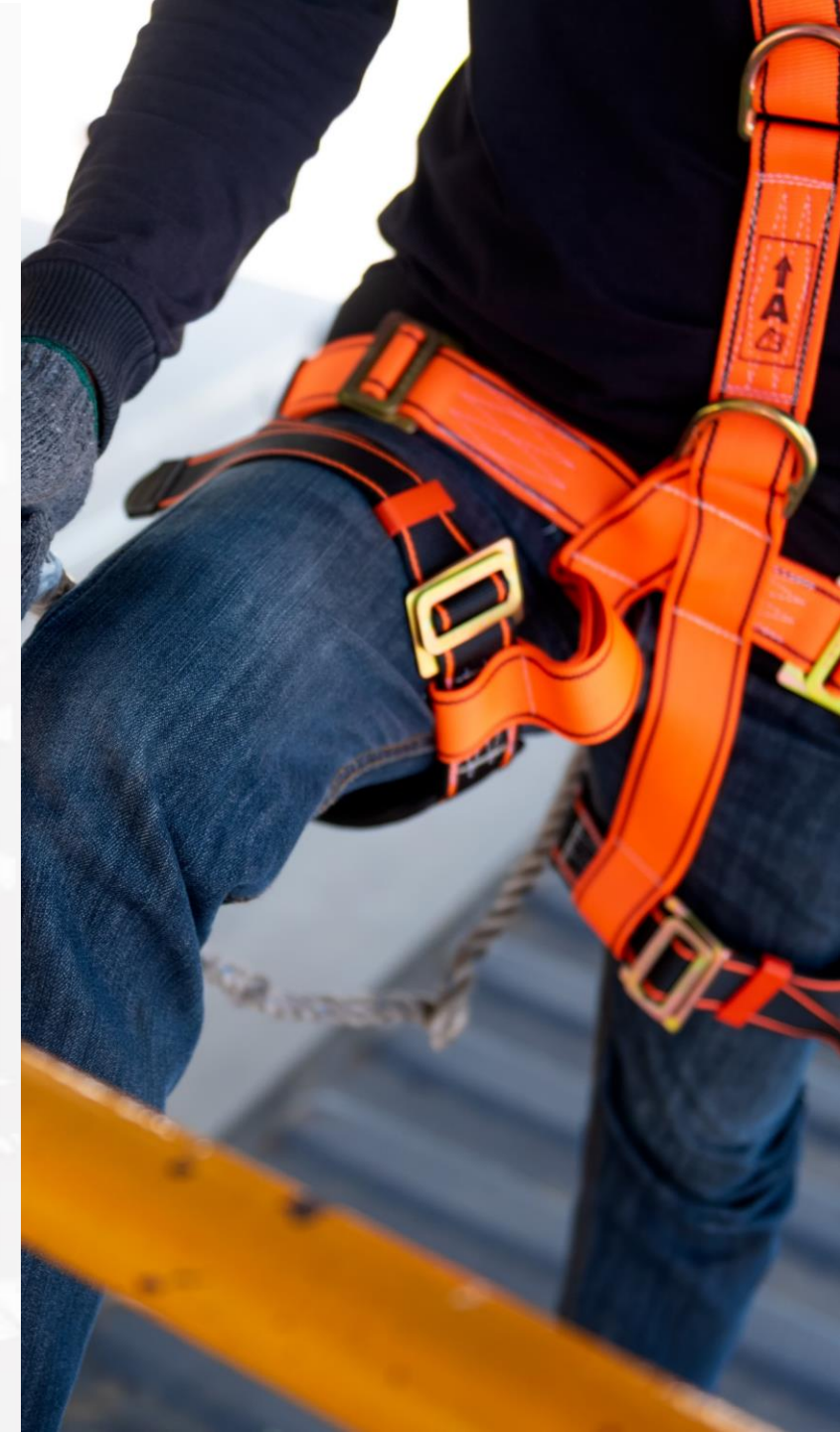
Operators must:

- Be tied off while inside the basket, even if boom is not extended
- Be trained on safe operation
- Remain in the lift basket at all times (feet on the floor, not railing)

Scissor lifts

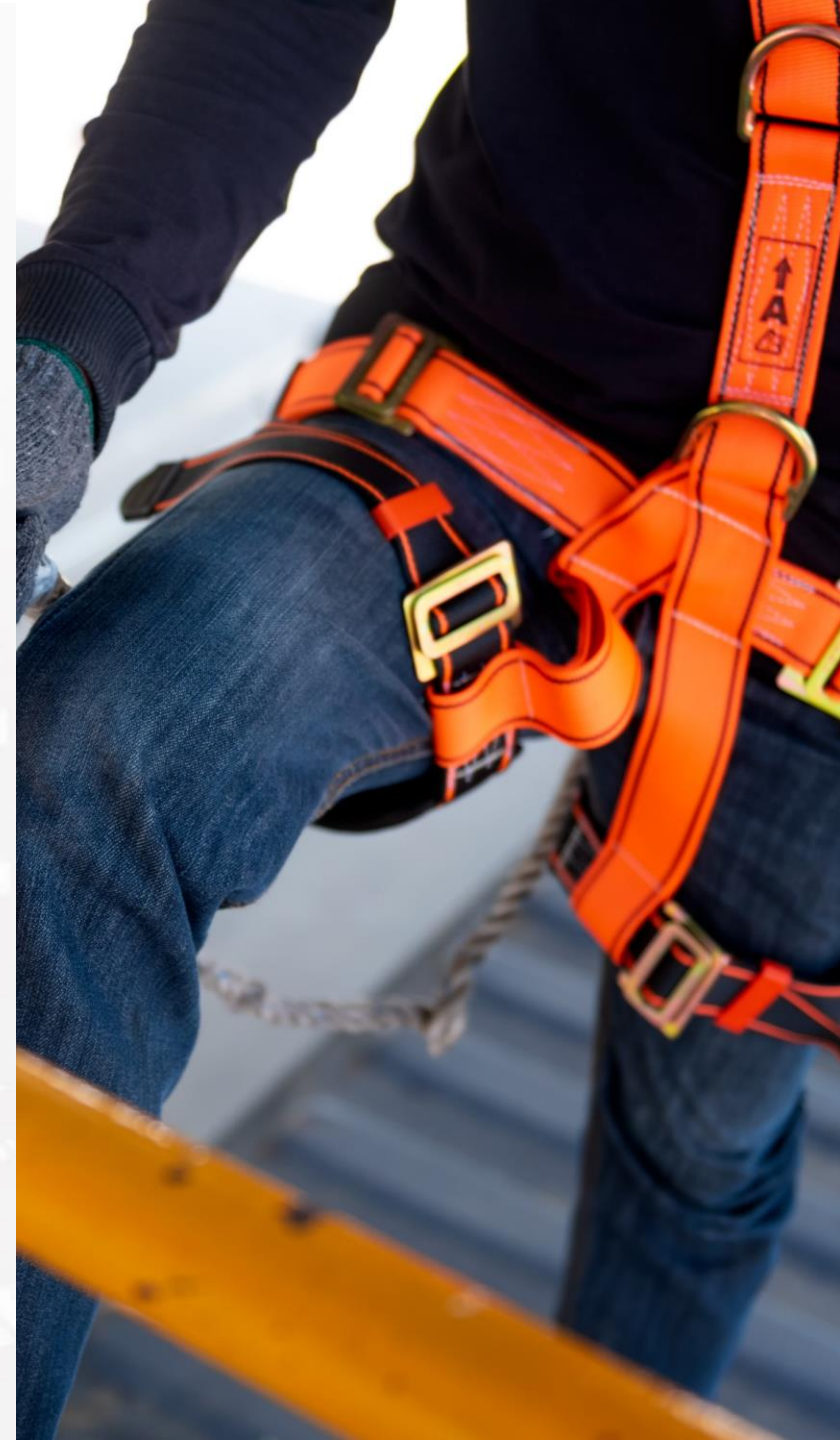
Operators must:

- Follow manufacturer's guidelines for fall protection
- Be trained on safe operation



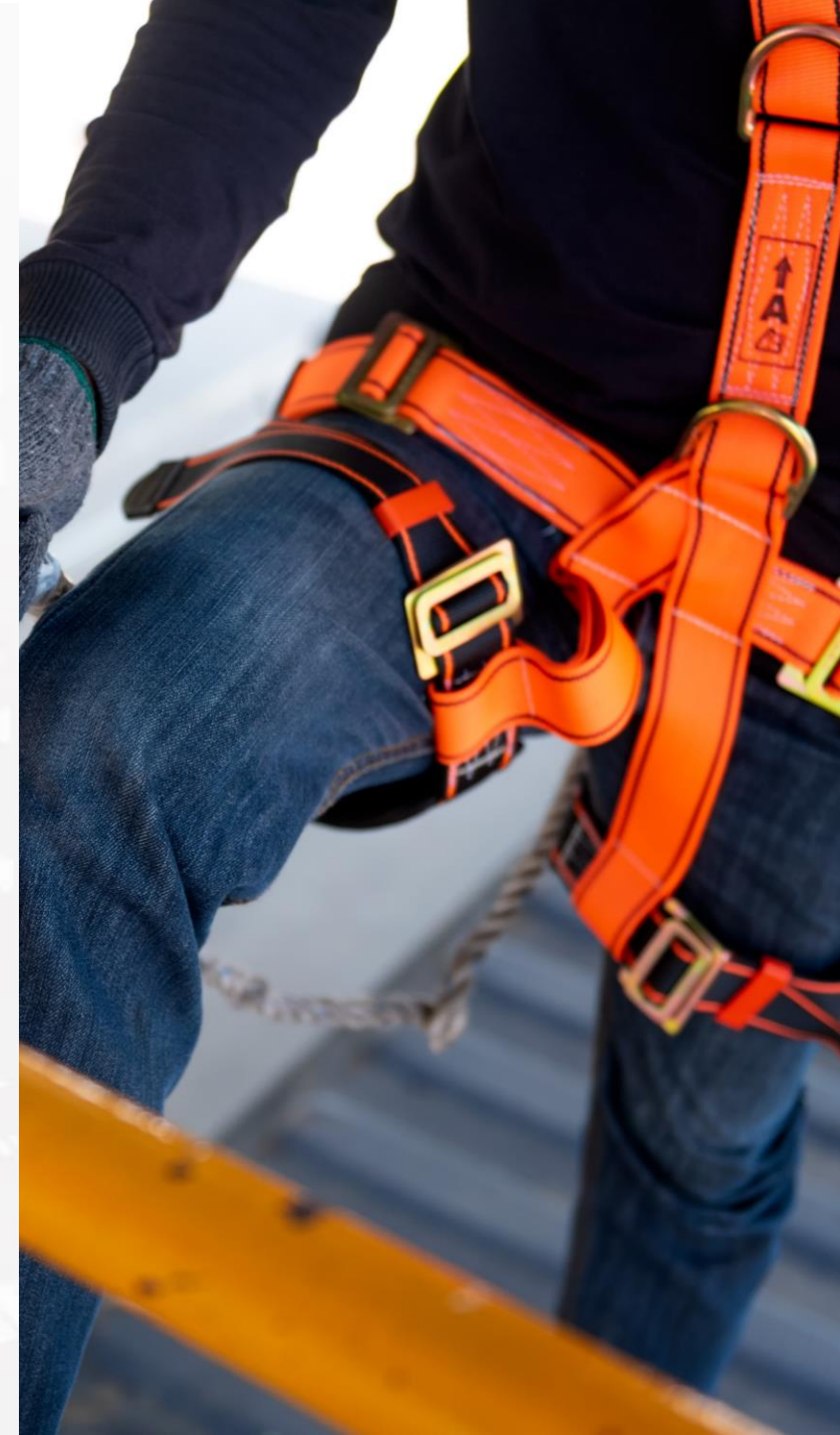
Guardrail systems

- Typically are 42" in height (+-3") with a mid-rail installed at least 21" in height
- Must be able to withstand 200 lbs. of force, in any direction, without failure
- Top rail deflection must not exceed 3"
- Wire rope must be at least ¼" in diameter and flagged every 6' for visibility



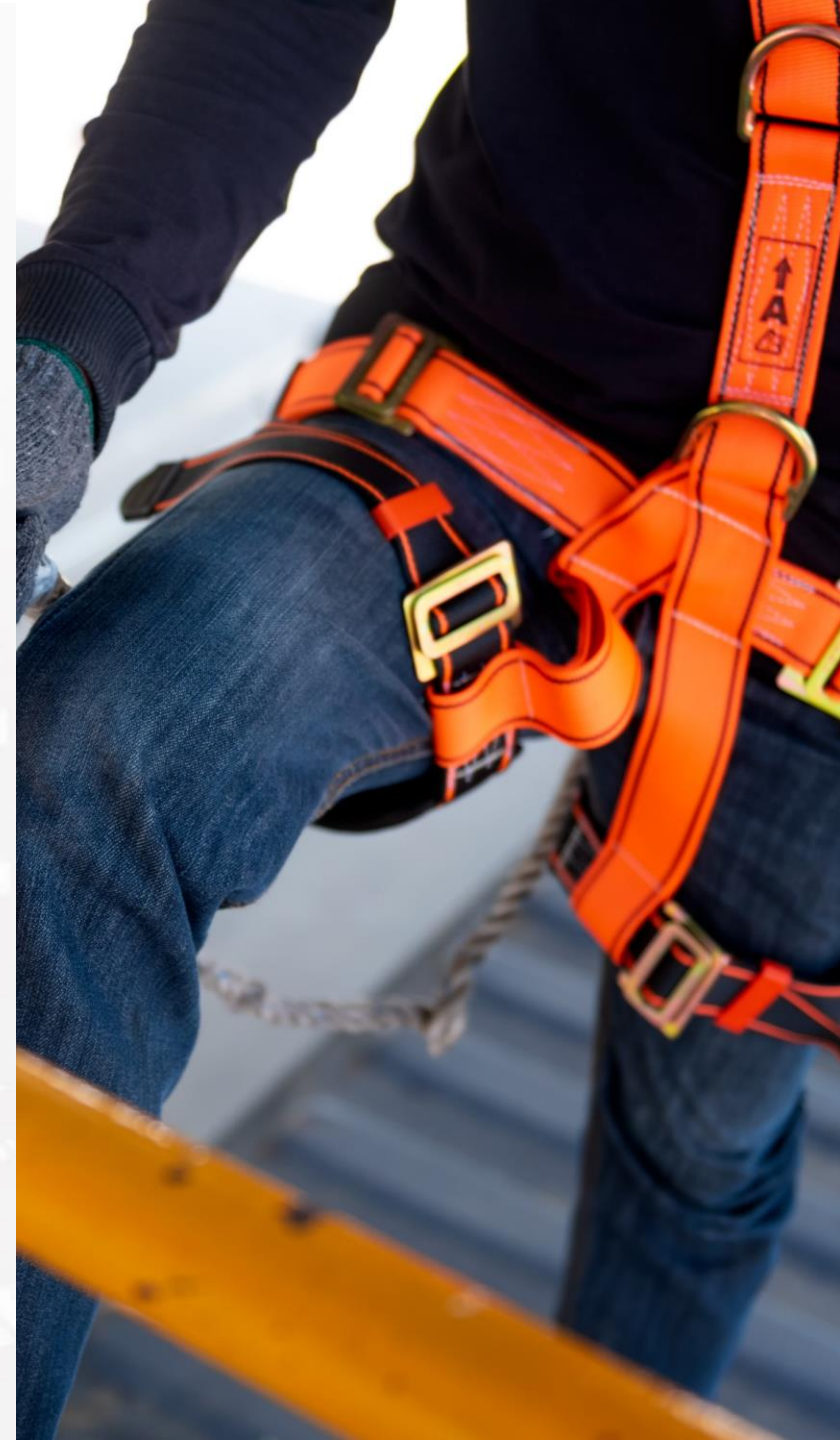
Personal fall arrest systems (PFAS)

- PFAS must be inspected prior to each use for wear, damage, and other deterioration
- Defective equipment must not be worn and must be immediately removed from service
- Lanyards must be attached to the Dee-ring in the middle of the back at the shoulder level
- Anchor points must be able to withstand at least 5,000 lbs.



Personal fall arrest systems (PFAS)

- The employer must provide for prompt rescue of employees in the event of a fall
- PFAS cannot be attached to guardrail systems
- **Positioning devices** must be rigged so that the employee cannot fall more than 2'



Fire Safety

In this section:

- Fire protection
- Flammable liquids
- Liquefied petroleum (LP-Gas)

Fire protection

- Subcontractors are responsible to provide fire protection for their specific operations
- Fire extinguishers must be conspicuously located and periodically inspected
- Travel distance to an extinguisher must not exceed 100'
- A fire extinguisher must be within 50' of any outdoor storage of flammable liquids exceeding 5 gallons



Flammable liquids

- Flammable liquids must be stored in metal safety cans containing a spring loaded top and a flash arrestor
- Flammable liquids may not be stored in plastic containers



Flammable liquids

- No more than 25 gallons of flammable liquids may be stored in a room outside of an approved storage cabinet
- Outdoor storage must not exceed 1,100 gallons, in any one area, and be positioned at least 20' from any building



Liquefied petroleum (LP-Gas)

- LP-Gas containers must not be stored within buildings, regardless of whether they are full or empty
- When stored outdoors, containers must be in a suitable, well ventilated enclosure



Tools & Equipment

In this section:

- Heavy equipment
- Ladders
- Scaffolds
- Cranes
- Hoisting and lifting
- Hand and power tools
- Materials handling
- Welding and cutting

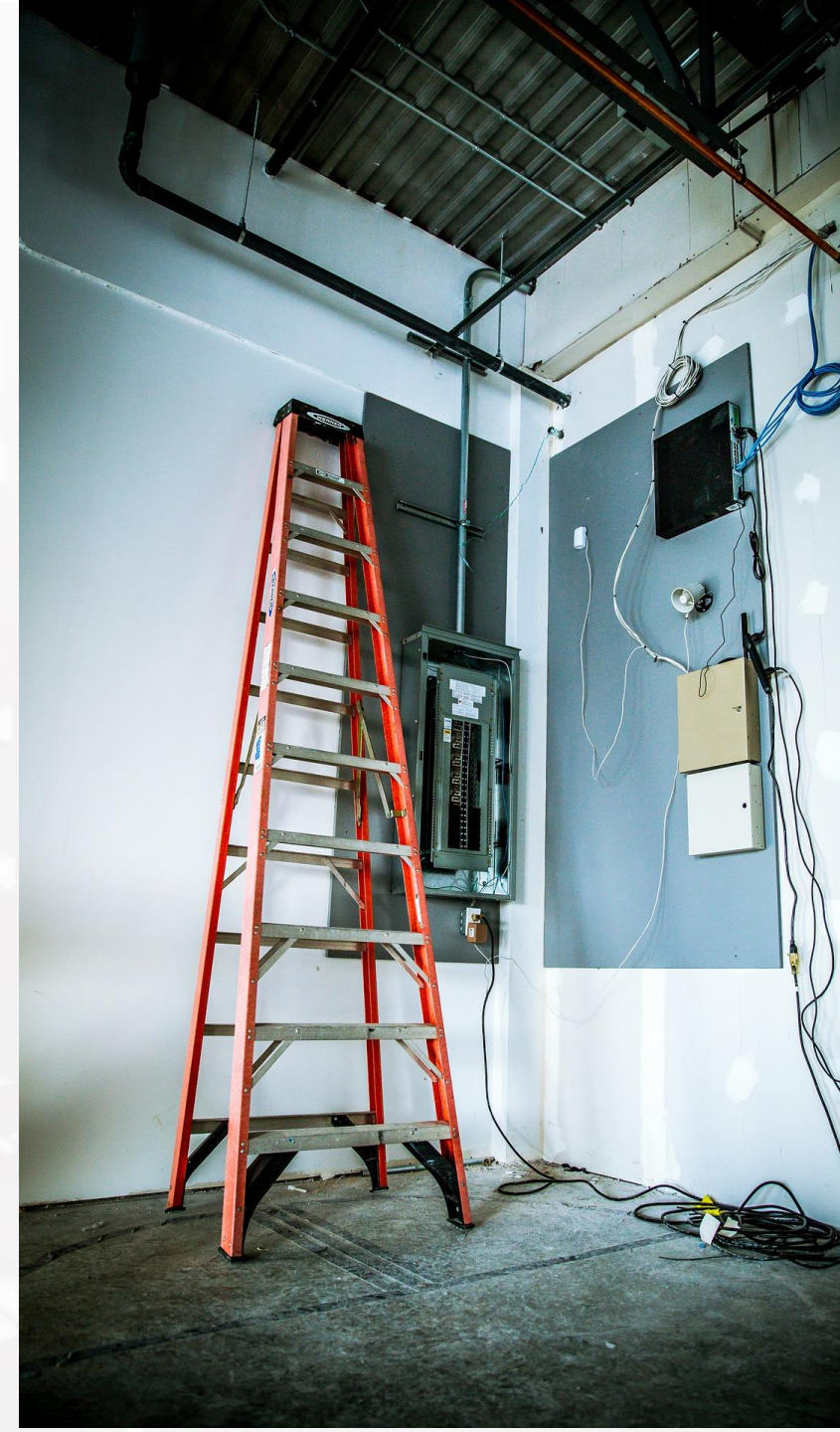
Heavy equipment

- Do not operate vehicles in reverse with an obstructed rear view unless it has a reverse signal alarm capable of being heard above ambient noise levels or a signal observer indicates that it is safe to move
- Be aware of blind spots
- Only use equipment for its intended purpose
- Maintain a minimum 10' safe working distance from electric lines



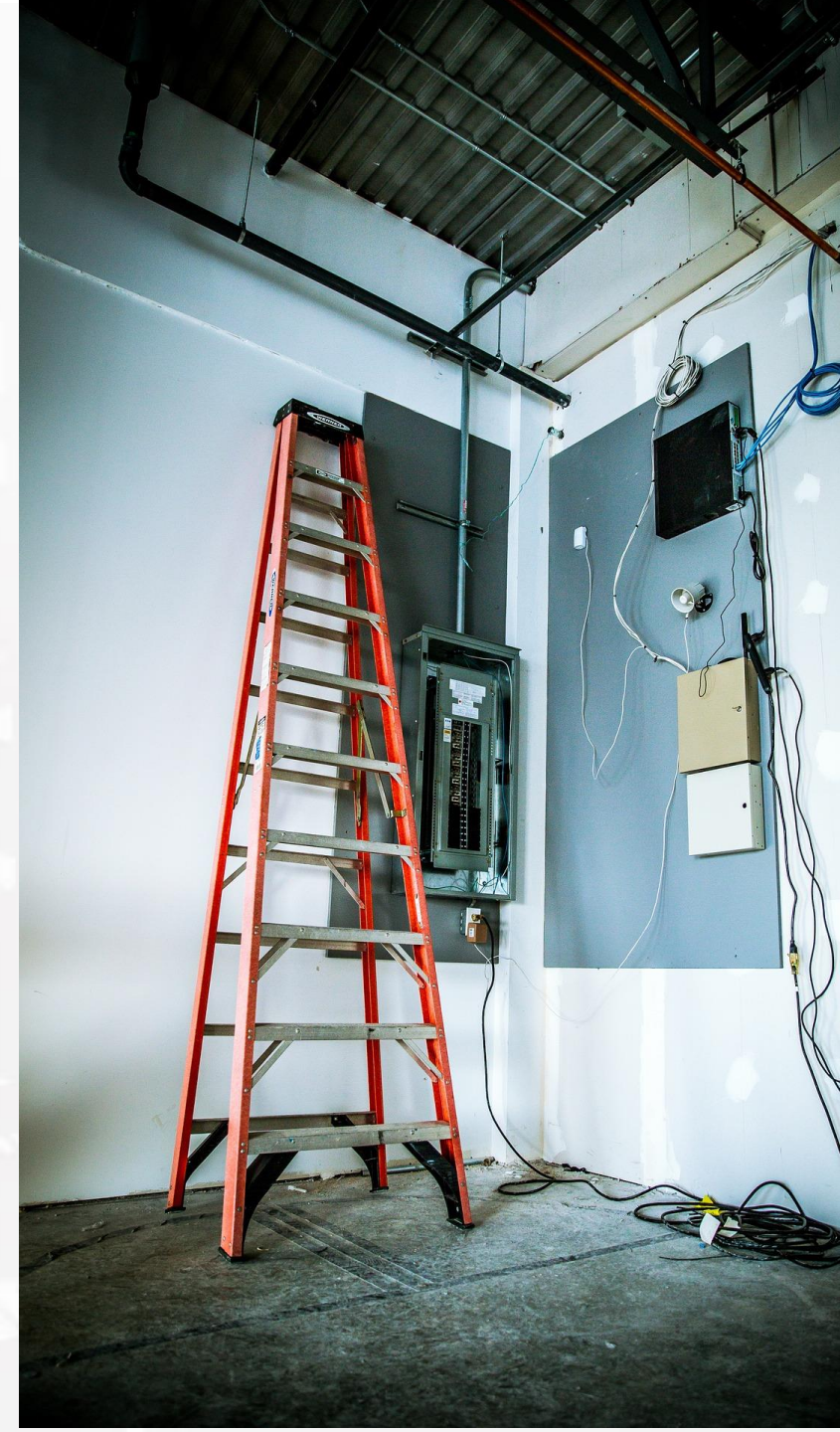
Ladders

- Maintain a 3-point contact
Two hands and a foot, or two feet and a hand when climbing/
descending a ladder
- Only put ladders on a stable and level
surface
- Extend the top of the ladder three feet
above the landing



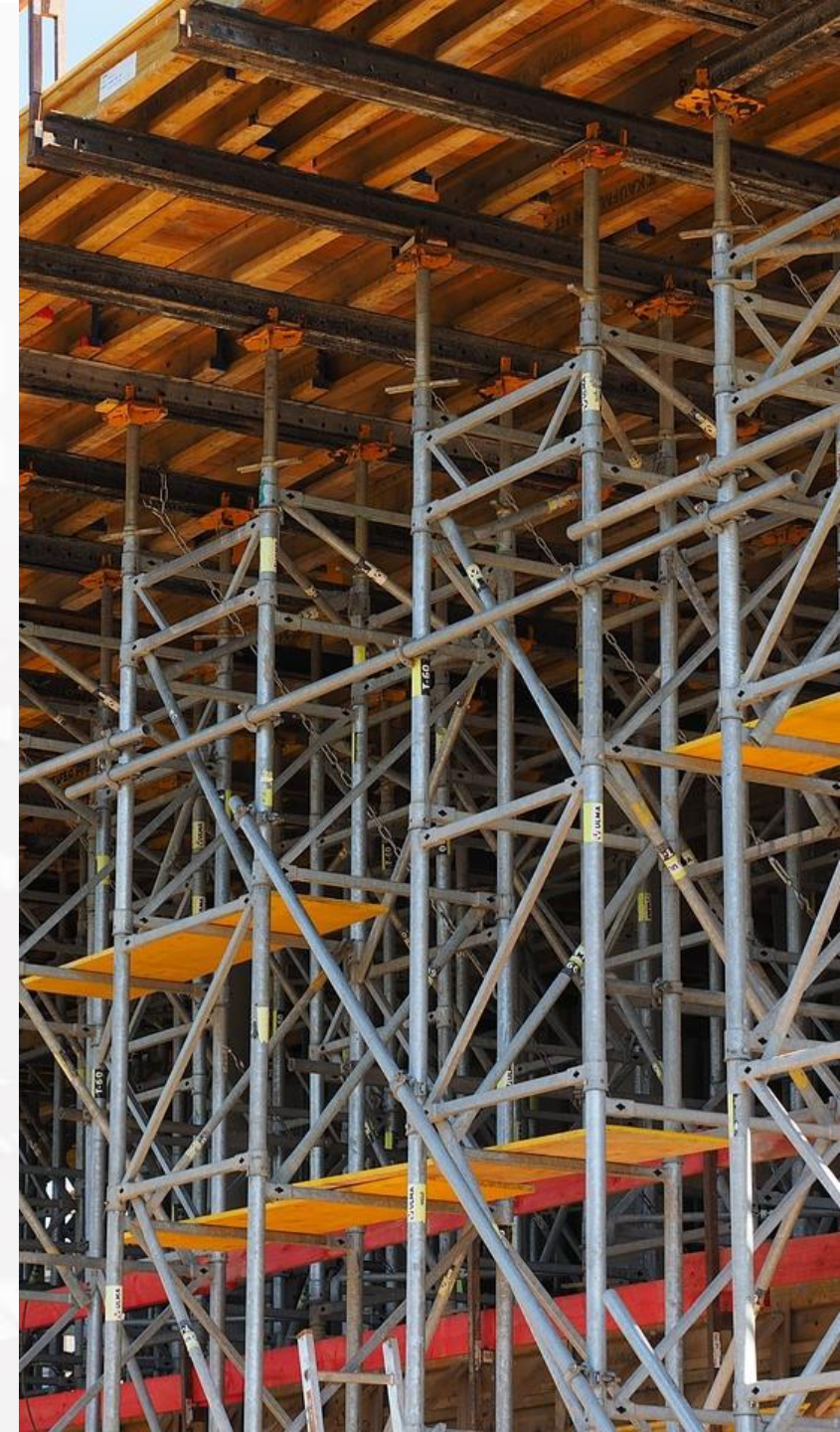
Ladders

- Stepladders must be opened fully and locked while in use
- Ladders must be secured to prevent accidental displacement
- Ladders must be used as designed
- Set the ladder at the proper angle
When a ladder is leaned against a wall, the bottom of the ladder should be one-quarter of the ladder's working length away from the wall



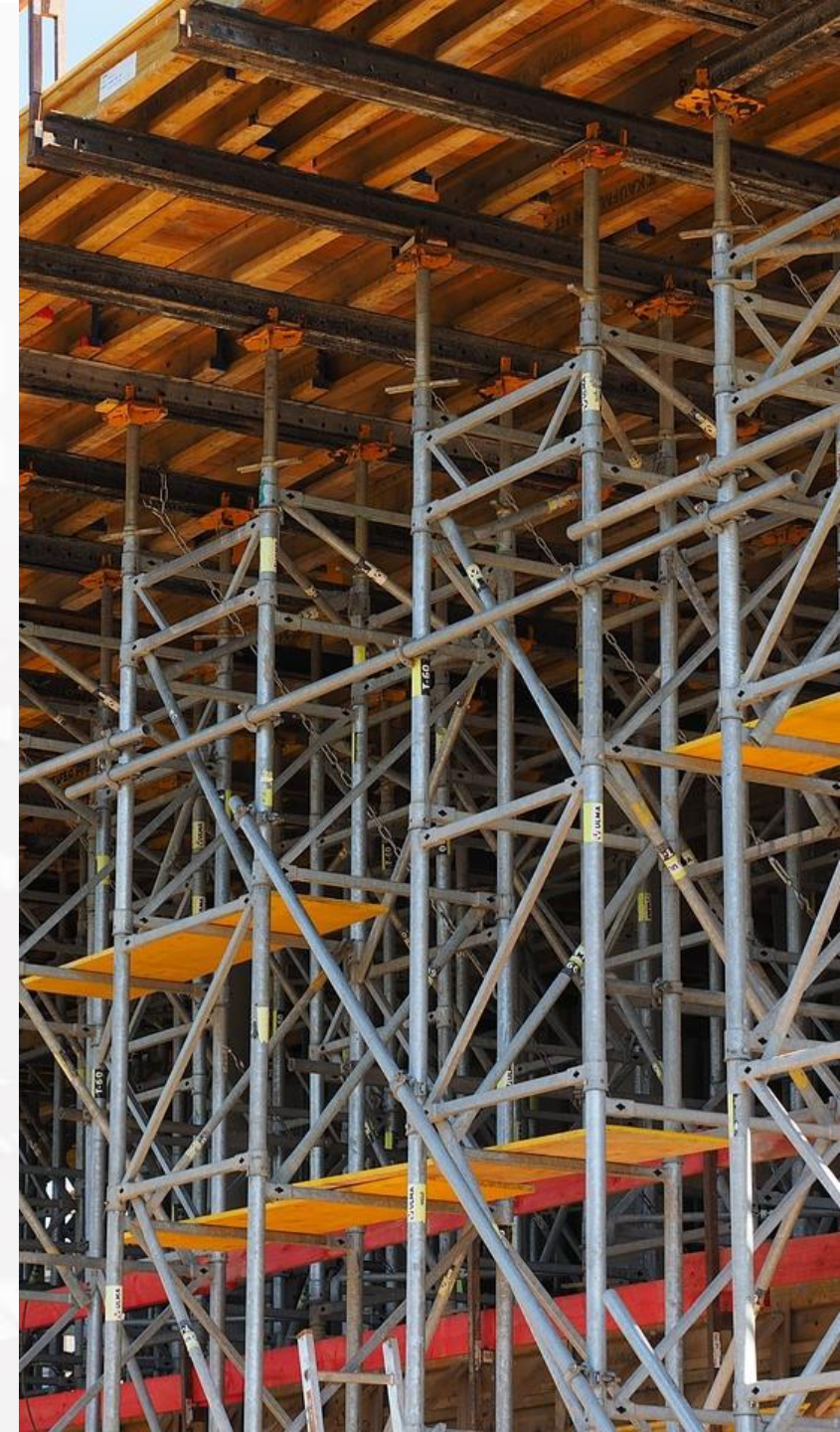
Scaffolds

- Each scaffold and scaffold component must support– without failure– its own weight and at least 4 times the maximum intended load applied or transmitted to it
- **A qualified person must design the scaffolds,** which are loaded in accordance with that design
- Each platform must be planked and decked as fully as possible with the space between the platform and uprights not more than 1 inch



Scaffolds

- Supported scaffolds are platforms supported by legs, outrigger beams, brackets, poles, frames, or similar rigid support
- Supported scaffolds with a height to base width ratio of more than 4:1 must be restrained by guying, tying, bracing, or an equivalent means
- Supported scaffolds' poles, legs, posts, frames, and uprights must bear on base plates and mud sills, or other adequate firm foundation



Scaffolds

- Guardrails or PFAS must be used when the fall hazard is 10' or more
- Scaffolds must be inspected by a competent person before each shift
- Scaffolds must not be moved while employees are working from them
- Cross braces cannot be used for access / egress



Cranes

- Cranes must remain a minimum of 10' from overhead high voltage (OHHV) lines
- The Subcontractor must assume the OHHV lines are energized unless the utility confirms that they are not
- A competent person must inspect the crane prior to each shift



Cranes

- Operators must be certified by one of four entities:
 1. An accredited crane operator certification testing organization
 2. An audited employer program
 3. Qualification by the U.S military
 4. Licensing by a government entity
- Swing radius must be barricaded to prevent accidental contact
- The Subcontractor must ensure that each signal person meets the standard's qualification requirements



Hoisting and lifting

- Only certified riggers are permitted to control loads
- Tag lines must be used to control loads
- Alterations and modifications may not be made to any material or personnel hoists unless approved by the manufacturer
- Signal persons must be qualified by the employer
- Only one person may signal a crane at a time



Hand and power tools

- Power tools must be fitted with guards and safety switches
- When replacing grinding wheels, make sure the RPM rating on the wheel exceeds the motor rating
- Exposed moving parts of power tools need to be safeguarded including, but not limited to:
Belts, gears, shafts or other reciprocating, rotating, or moving parts



Hand and power tools

To protect user from shock and burns:

- Must be plugged into a grounded receptacle or be double insulated
- Ground prong must never be removed from the plug

When using pneumatic tools:

- A safety clip or retainer must be installed to prevent attachments such as chisels on a chipping hammer from being ejected during tool operation



Hand and power tools

- If an air hose is more than 1/2-inch in diameter:
 1. A safety excess flow valve must be installed at the source of the air supply to reduce pressure in case of hose failure
 2. Pneumatic power tools must be secured to the hose with a whip-check device to prevent accidental disconnection
- Powder-actuated tools operate like a loaded gun and must be treated with extreme caution
- Proof of training must be with the operator at all times



Materials handling

Back Injury Prevention

- Have materials delivered as close to where they will be used as possible
- Use pallet jacks and hand trucks to transport heavy items
- Ask for help if lifting heavy objects
- Maintain neutral and straight spine alignment whenever possible



Welding and cutting

- Valve protection caps shall be in place and secured when transporting, moving, and storing compressed gas cylinders
- Compressed gas cylinders must be secured in an upright position at all times
- Oxygen cylinders in storage shall be separated from fuel-gas cylinders or combustible materials, a minimum distance of 20 feet or by a noncombustible barrier at least 5 feet high having a fire-resistance rating of at least one-half hour



Welding and cutting

- Cylinders shall be kept far enough away so that sparks, hot slag, or flame will not reach them; when this is impractical, fire resistant shields shall be provided
- No welding, cutting, or heating shall be done where the application of flammable paints, or the presence of other flammable compounds, or heavy dust concentrations creates a hazard
- Suitable fire extinguishing equipment shall be immediately available in the work area





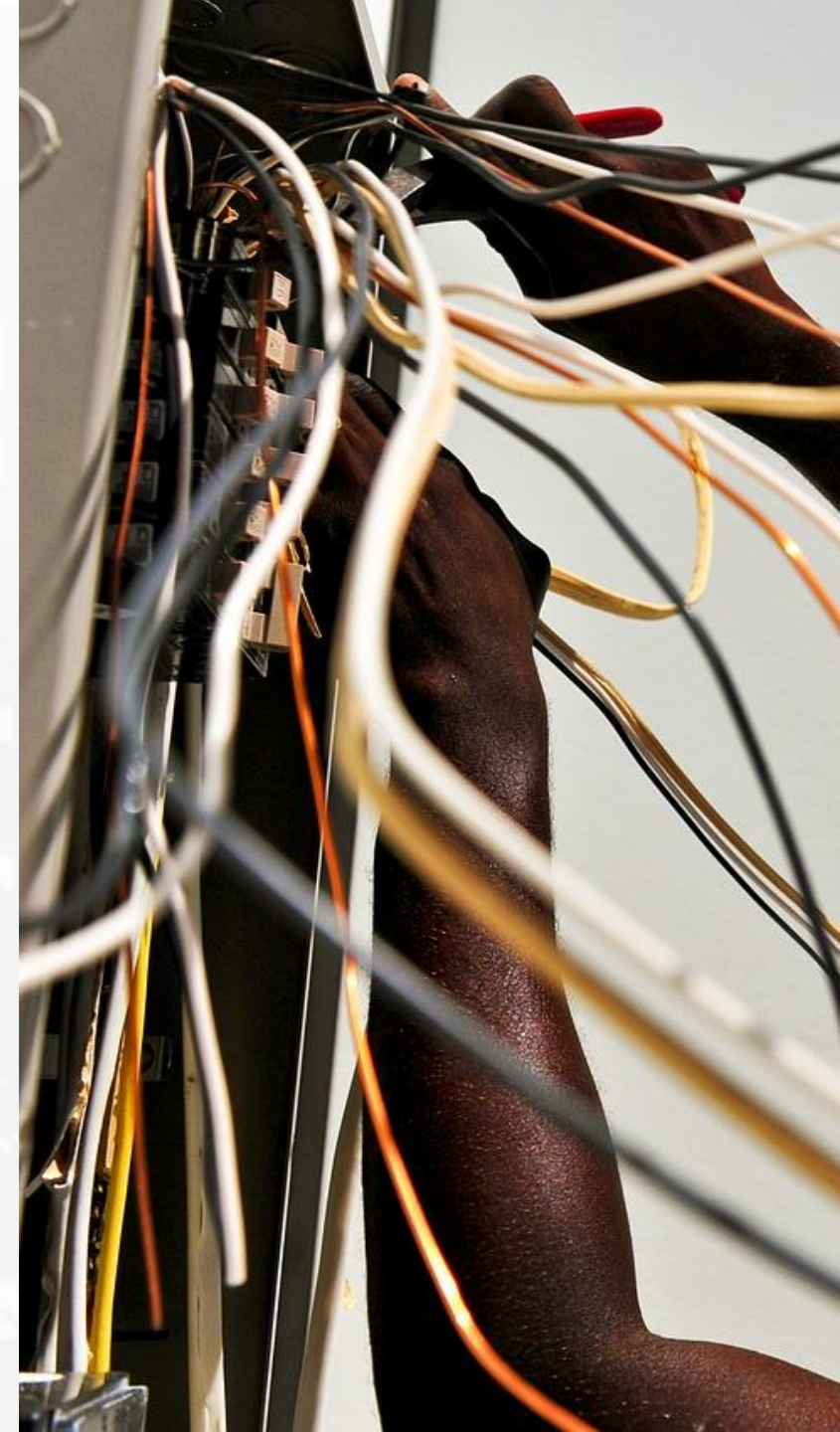
Electrical Safety

In this section:

- Power lines
- Power cords
- Lights
- Circuits

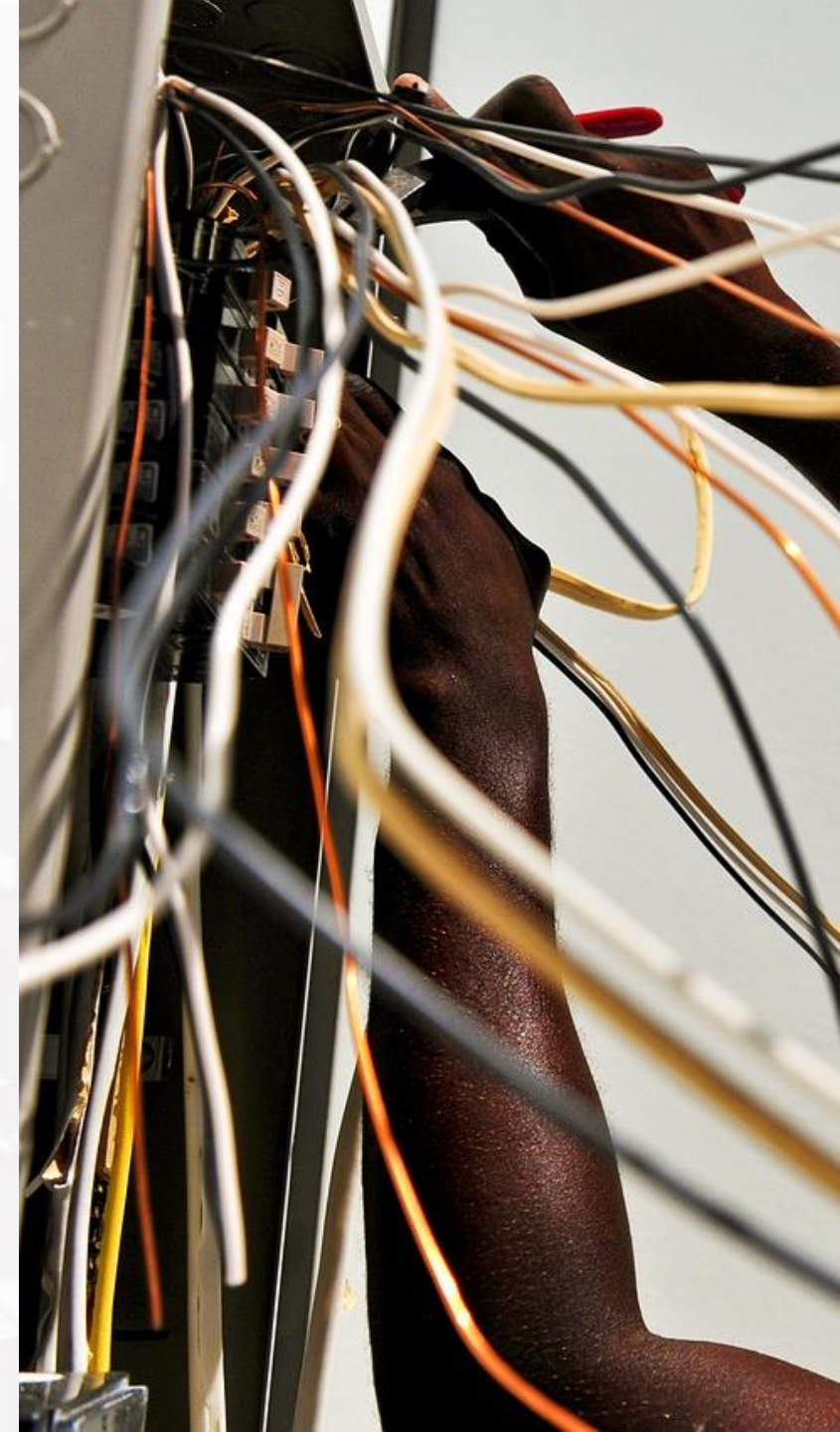
Electrical safety

- Look for overhead power lines and buried power line indicators
- Stay at least 10 feet away from overhead power lines and assume they are energized
- Use factory-assembled cord sets and only extension cords that are 3-wire type
- Use of ground-fault circuit interrupters (GFCIs) is required for all extension cords



Electrical safety

- Extension and power cords shall be protected from sharp edges and potential pinch points
- Temporary lights must be protected by cage guards
- Circuits must be locked and tagged out prior to employees working on them





Motor Vehicles & Traffic

In this section:

- Motor vehicles and mechanized equipment
- Traffic control and flagging

Motor vehicles and mechanized equipment

- All vehicles and equipment should be checked at the beginning of each shift to ensure that parts that affect the safe operation are free from defects
- Any vehicle or equipment with an obstructed view to the rear must have a back up alarm or a spotter in place while backing
- Heavy machinery or equipment beds must be blocked against falling or pinching hazards while employees are working under them



Traffic control and flagging

- All traffic control must be performed in accordance with the Manual of Uniform Traffic Control Devices (MUTCD) along with state and local guidelines
- Flaggers must use the STOP / SLOW paddle when flagging





Trenching & Excavation

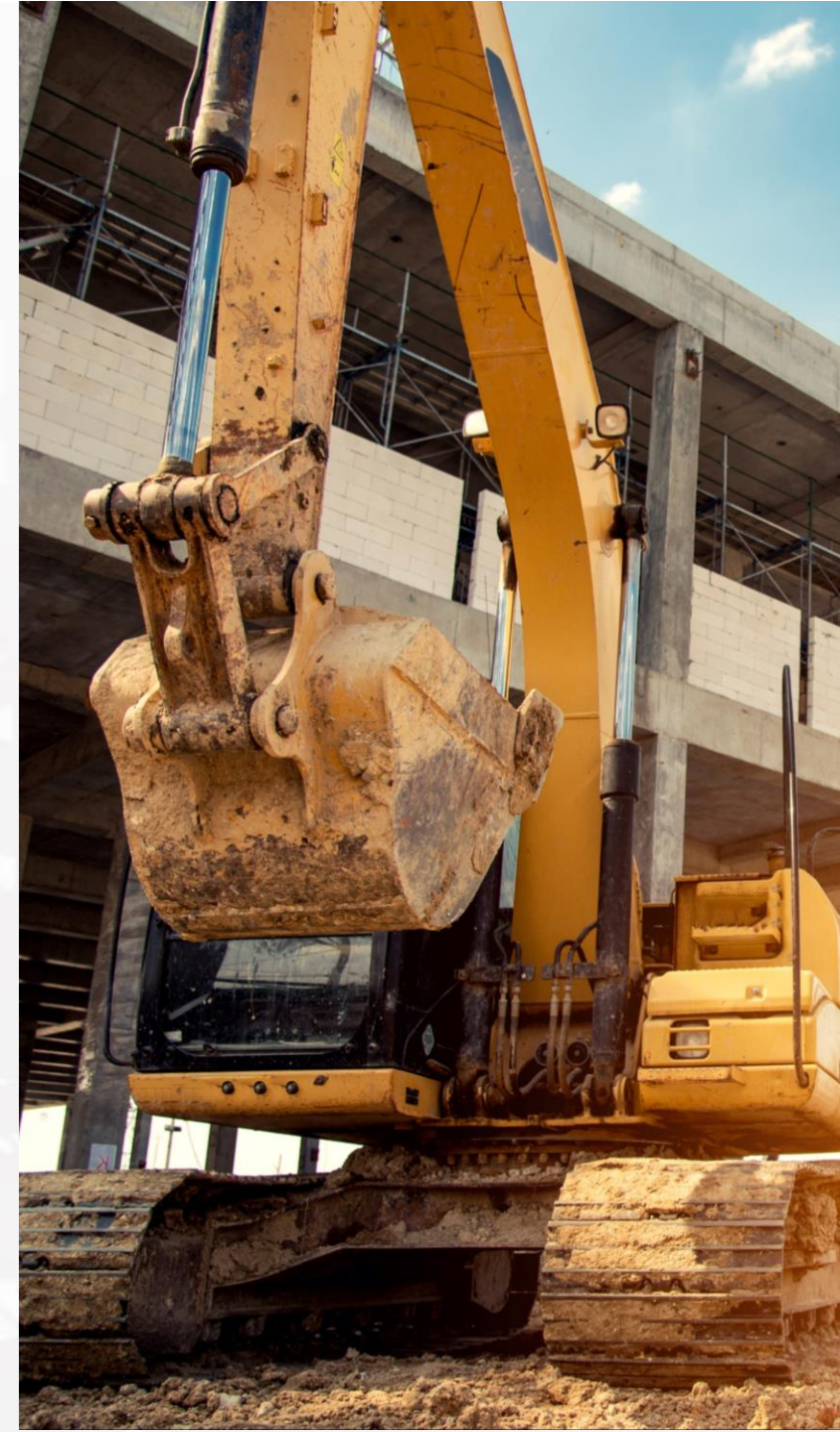
In this section:

- Underground utilities
- Soil classifications
- Inspections

Trenching and Excavation

Specific excavation requirements:

- The location of underground utilities must be determined prior to excavating
- **Employees working in an excavation >5' in depth must be protected by a sloping or shoring system**
- Soil must be classified by a competent person using at least one manual and visual test
- Excavations must be inspected daily by a competent person





Confined Spaces

In this section:

- Defining confined spaces
- Pre-entry planning
- Permit required confined space

Confined space entry

Confined spaces have three criteria:

1. Large enough for a worker to enter
2. Limited means of entry or exit
3. Not designed for continuous occupancy

Before workers can enter a confined space, employers must provide pre-entry planning, including:

- Having a competent person evaluate the work site for the presence of confined spaces, including permit-required confined spaces



Confined space entry

Once the space is classified as a **Permit Required Confined Space**, identify:

- The means of entry and exit
- Proper ventilation methods
- Elimination or control of all potential hazards in the space
- Follow appropriate Permit Required Confined Space procedures



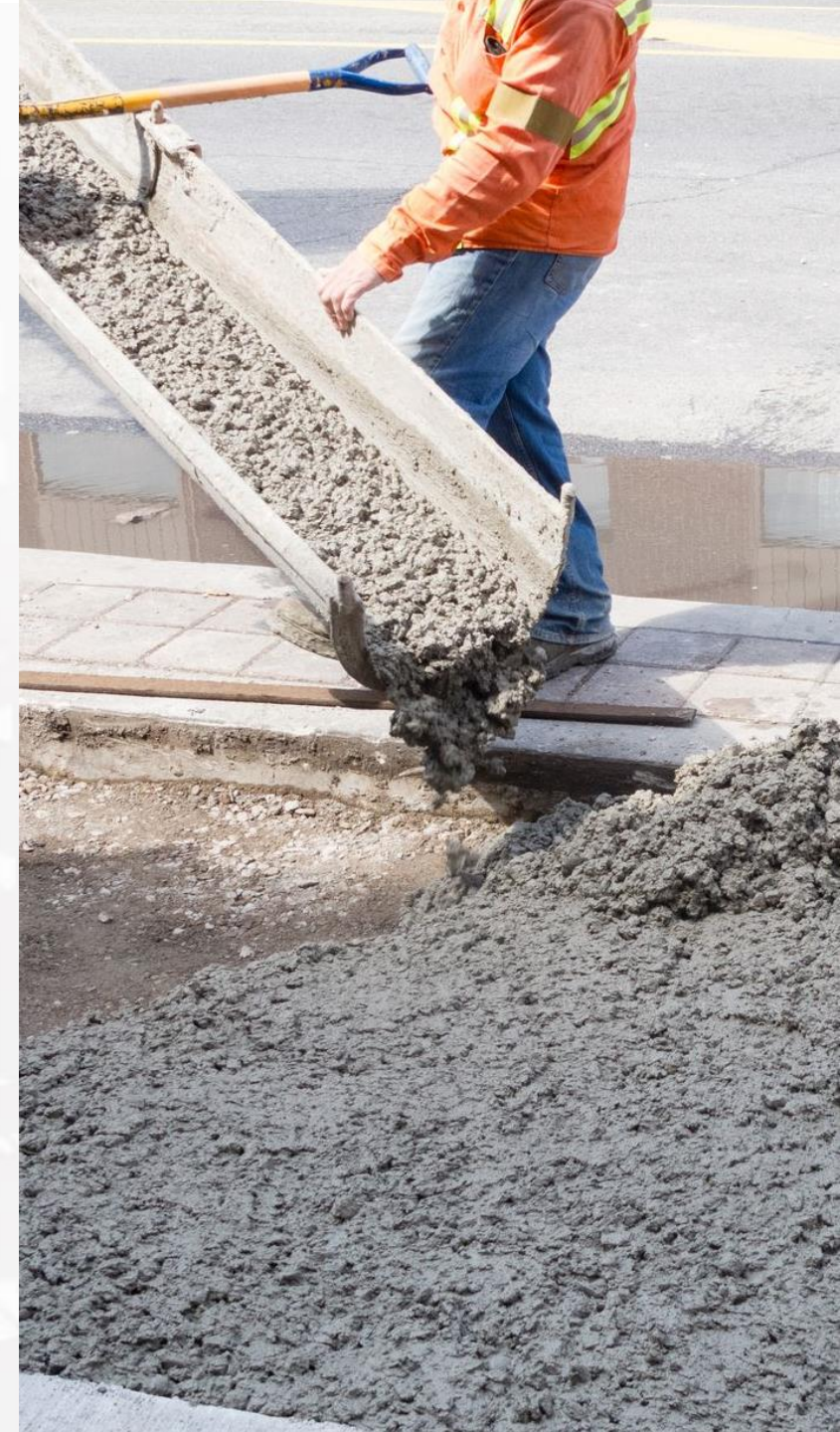
Concrete & Masonry

In this section:

- Working near concrete machines
- Limited access zones
- Masonry walls
- Masonry saws

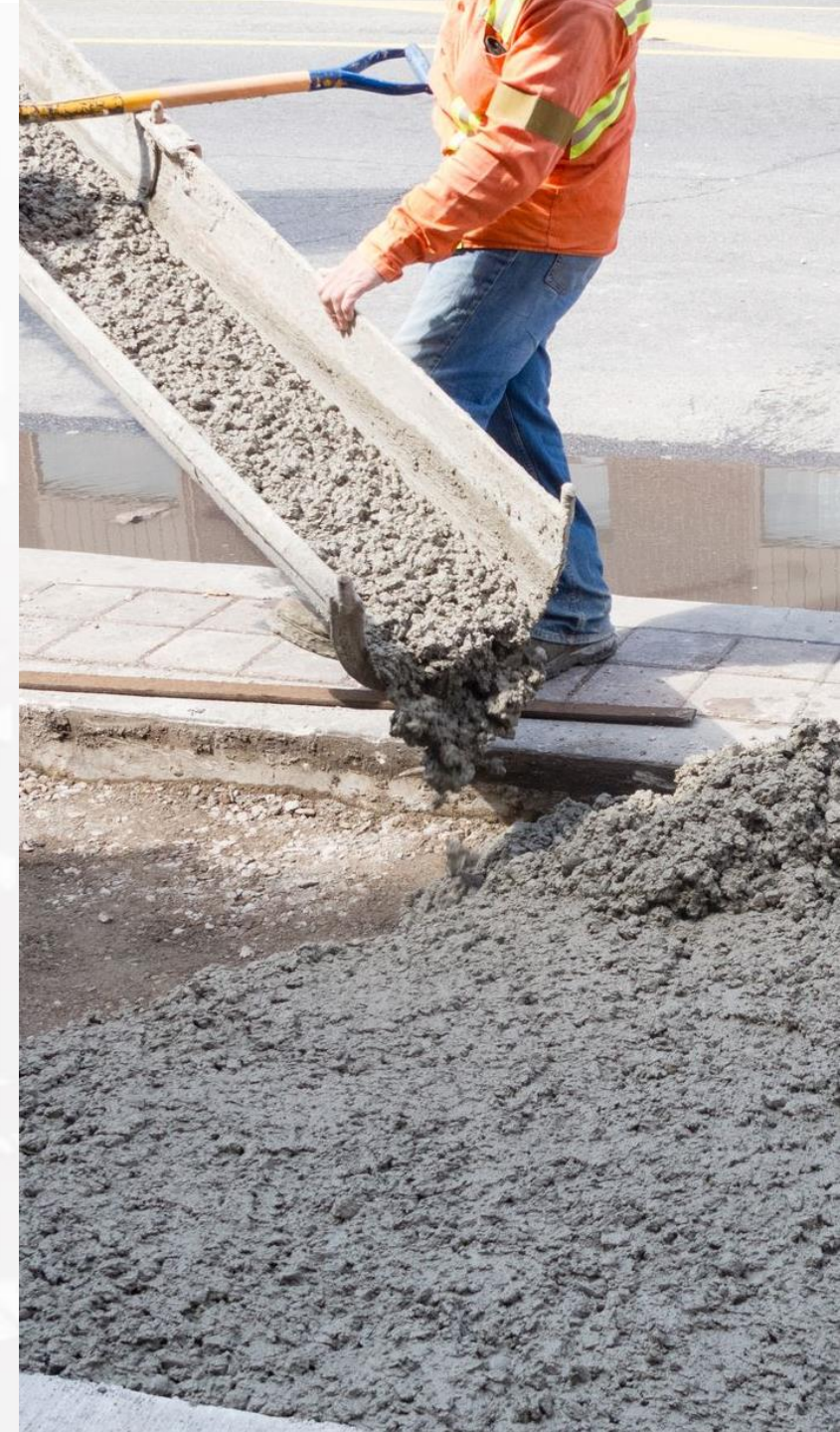
Concrete and masonry construction

- No employee shall be allowed to work under concrete buckets
- Concrete troweling machines must be equipped with a “dead man” switch
- Protruding rebar, onto which employees could fall, must be protected against impalement hazards



Concrete and masonry construction

- A limited access zone (LAZ) shall be established whenever a masonry wall is being built
- The zone shall be equal to the height of the finished wall plus 4'
- All masonry walls $> 8'$ must be braced to prevent collapse
- Masonry saws must be guarded with a semicircular guard over the blade



Steel Erection

In this section:

- General requirements
- Columns
- Controlled decking zones
- Shear connectors

Steel erection

General requirements:

- Erection shall not commence until the concrete in footings, piers and walls has attained 75% of the intended minimum compressive design strength
- Routes for suspended loads shall be pre-planned so that no employee is required to work directly beneath a suspended load



Steel erection

- Columns must be anchored with at least 4 anchor bolts, structural members must have at least 2 bolts
- Controlled decking zones (CDZ) must be clearly marked and used only by employees in leading edge work
- Shear connectors cannot be installed until after metal decking is placed





Part 2

COVID19

Disclaimer

Safety Leadership

Project-Specific Guidelines

Subcontractor Planning

Education

Communication

Preventative Measures

Social Distancing/Separation/People
Movement

Site Cleaning Protocol

Fit for Duty Standards

Conclusion

Disclaimer

This orientation is not intended to represent or replace the safety training responsibilities of employers of employees working on a Mowery project. It is the responsibility of each subcontractor, lower-tier subcontractor, and vendor to ensure its employees have been properly trained in accordance with applicable laws, statutes, ordinances, rules and regulations, and lawful orders of public authorities, for the safety of persons and property.



Mowery Project- Specific Guidelines

In this section:

- Daily Communication/huddles
- Disciplinary action
- Preventative Measures
- Exposure reporting

Self Declaration Form

- All workers on site must fill out the Jobsite Self Declaration form prior to work.
 - Photo of completion or digital copy must be sent to Mowery Superintendent.
- If any worker identifies any signs or symptoms of the COVID-19 they will not be permitted on site.



Daily huddle

- Conducted by the Mowery Superintendent with Subcontractor Foremen, the Daily Huddle is a discussion of specific activities for the work day, the potential hazards associated with the activities and the methods necessary to mitigate those hazards.
- All Huddles must be completed via phone, video, or social distancing.

Attendance by Subcontractor Foremen is **mandatory**.



Disciplinary Action

Grounds for Suspension or Removal from a Mowery Project include, but are not limited to:

- Failure to follow policies and procedures
- Failure to wear PPE
 - Face Covering, Hard Hat, HIVIS
- Failure to abide by CDC social distancing guidelines
- Serious or intentional unsafe acts
- Failure to maintain safe housekeeping cleanliness



Exposure reporting

Exposure defined:

The state of being exposed to contact with something.



Exposure reporting

- Report all COVID-19 exposure to your supervisor **immediately**
- The subcontractor supervisor must then immediately report the exposure to the Mowery Superintendent
- COVID-19 exposure investigation must be filled out.





Subcontractor Planning

In this section:

- Site specific COVID-19 Health and Safety Planning

Pre-Work Planning

Subcontractor Plan:

1. Site-Specific COVID-19 Health and Safety Plan – Keeping your employees within a safe distance of each other and other site personnel.
2. Project organizational plan focused on keeping crews in separate areas on the project to maintain social distancing.
3. Prepare coordinated site logistics, identifying critical elements (i.e. temp facilities, work force pathways, work force break areas).
4. Outline requirements and organize daily virtual planning and coordination meetings.



Stop work authority

- Stop Work Authority empowers employees and contract workers with the ability and obligation to stop work if conditions are deemed at-risk

If you **see something** that doesn't look right, **say something** to your supervisor





Education

In this section:

- Review your plan with employees

Employee Review

1. Preconstruction communications outlining project-specific requirements to all onsite project stakeholders (i.e. vendors, subcontractors, designers, etc.).
2. Prepare, disseminate, and train (virtually, as possible) on COVID-19 guidelines.
 - a.) Using visuals on site and communicating information via email.
3. Implementation and enhancement of site specific COVID-19 signage and awareness.
 - a.) Posting up to date materials concerning jobsite requirements
4. Personal hygiene practices in accordance with CDC recommended guidelines and actions.
5. Ensure Emergency Action plan includes muster points that are spread out and all personnel are reminded to maintain safe distance from others.
 - a.) Muster point is prepared by Mowery superintendent.





Communication

In this section:

- Overall Site communication for COVID19 reporting and Subcontractor messaging

Site communication

1. Reporting protocol when workers are diagnosed as carrying COVID-19 or suspected/confirmed as having been exposed to COVID-19.
 - a.) Refer to Jobsite Exposure Protocol.
2. Provide positive health messaging to the workers. Appropriate communication of site-specific workforce conditions and general information.
3. Online access and training material on evolving CDC guidelines.
4. Work force engagement and process to incorporate improvements to Daily Huddles and work execution to reduce possible exposure risks.





Preventative Measures

In this section:

- Acceptance to site and COVID-19 Observations

COVID-19 Observations

1. Superintendents will observe workforce to identify any workers that have symptoms (cough, sneeze, runny nose).
2. Require all personnel to acknowledge that they have not knowingly been in contact with anyone that is COVID-19 positive or experience any COVID-19 symptoms.
3. Delivery drivers and visitors are not allowed on site without adhering to Site-Specific COVID-19 Health and Safety Plan and escort.
 - a. Limited contact deliveries will not require a self declaration.





Site Population Management and Distancing

In this section:

- Social Distancing

Social Distancing

1. Create separation plans so multiple crews maintain required spacing and eliminate trade stacking of work in same location.
2. Personnel-specific tools will be required. Cleaning protocols to be established if tool sharing is needed.
3. Personal tools will not be allowed in gang boxes. All tools stored within the gang boxes must be cleaned per the site cleaning protocol.
4. Provide safe distance floor/ground markings where personnel congregate (i.e. restrooms, wash stations, etc.)
5. Organize lunch gatherings to maintain safe worker distance.





SECTION 8

Site Cleaning Protocol

In this section:

- Housekeeping

Housekeeping

1. Ensure adequate restroom and handwashing facilities are kept in good condition for all personnel.
2. Signs in breakroom and throughout the building telling people how to properly dispose of their food, beverages, and construction debris. Emphasis on not leaving debris for others to clean and potentially share germs.
3. Community equipment and tools will be cleaned at the end of the shift.
4. All personnel must utilize their own dedicated PPE. Shared/community PPE will not be allowed.
5. Provide full-time personnel dedicated to cleaning consistent with CDC guidelines.





Fit for Duty Standards

In this section:

- Requirements

Health and Safety Requirements

1. Recommend that individuals who feel they are high-risk, as defined by CDC, not work onsite at the project.
2. Symptomatic with suspected or confirmed COVID-19:
 - i. Exclude from work until:
 - ii. At least 3 days (72 hours) have passed since recovery defined as resolution of fever without the use of fever-reducing medications and improvement in respiratory symptoms (e.g., cough, shortness of breath); and,
 - iii. At least 10 days have passed since symptoms first appeared
3. Any person that has had close contact with a confirmed COVID-19 patient ("Close contact" is defined as being within 6ft of a person with a confirmed case of COVID-19 for a prolonged period of time) will not be allowed to enter the site for 14-days starting from the day they last interacted with the person with COVID-19.
4. All personnel requesting access must be compliant with any applicable quarantine requirements for travelers returning from international locations. Please refer to guidance for return travelers provided by the location's country's health authority (for example, the CDC website for the U.S.).
5. Each worker's responsibilities are to be reviewed to determine if site access is absolutely needed or if their duties can be performed remotely.



Conclusion

- 1 Know the job, know the rules to stay safe
- 2 If you see an unsafe condition, have the courage to speak up (see something, say something)
- 3 **Safety is Not Optional**



MOWERY
SMART SAFETY